

BARKSDALE REPLACEMENT KIT, SUSPENSION VALVE - VOLVO/MACK 22527416 (KD 2502) SEVERE SERVICE

Replaces Hadley or Haldex (2 Bag Ports) height control valve - Volvo Trucks 2006 and newer

CONTENTS FOR KIT KD2502:

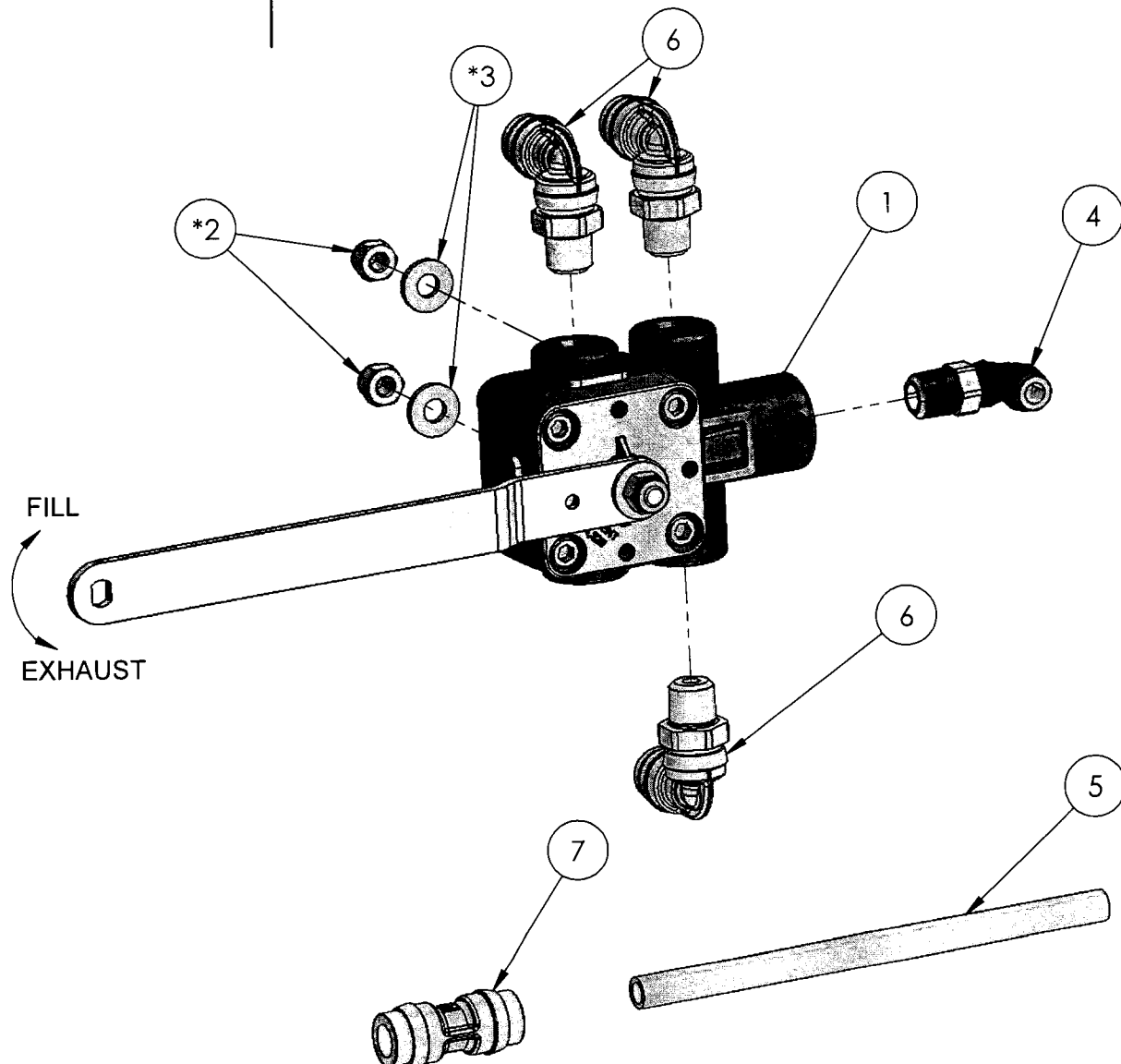
1. 52341-Q290 Valve (1)
2. Nut, Self Locking (2)
3. Washer, 1/4" (2)
4. Fitting, Elbow
1/4" NPT-1/4" PTC (1)
5. Tubing, 3/8" x 6" Lg (1)
6. Fitting, Elbow
1/4" NPT-3/8" PTC (3)
7. Fitting, Straight Union
3/8" PTC-3/8" PTC (1)

INSTRUCTIONS:

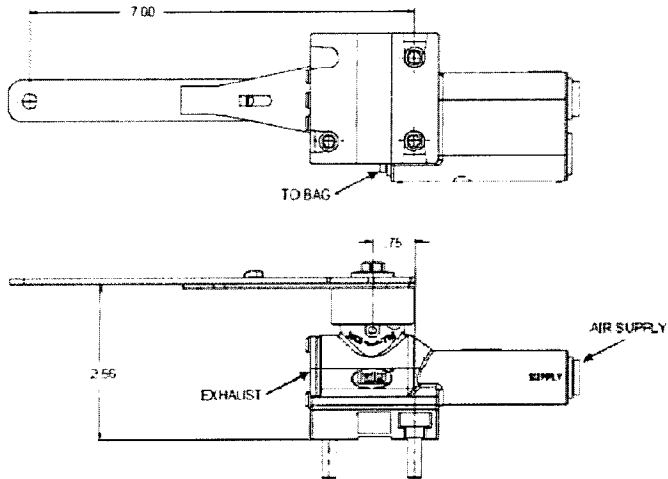
1. Install fittings onto valve as shown on figure 1.
2. Disconnect air lines to the Hadley or Haldex air suspension valve.

CAUTION: Air lines are under pressure and may blow debris.

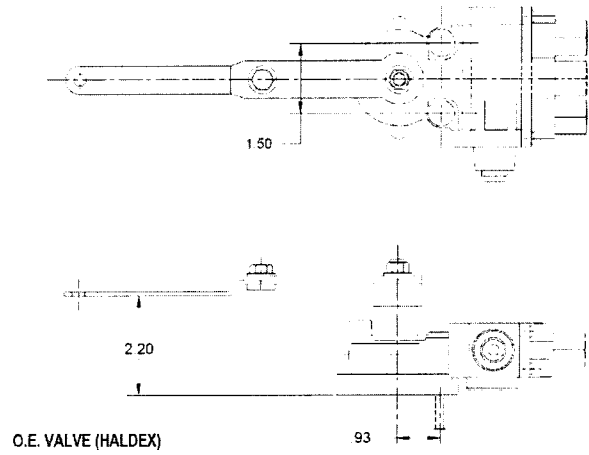
3. Disconnect linkage from Hadley or Haldex valve handle.
4. Remove valve, and identify the manufacturer of the valve being replaced.
5. Mount the new valve in the holes used to mount the valve being replaced.
6. Reconnect the air lines to the new valve. If tubing is too short, use the supplied straight union and tubing to extend to the desired length.
7. The air supply is always connected to the top port in the valve. This allows air to inflate the bags when the arm is in the up position.
8. Adjust the ride height to the Volvo specifications moving the end of the handle up or down to achieve the correct height.
9. Connect linkage to new valve handle.
10. Torque all nuts to 45 in-lbs.



* MOUNTING HARDWARE



O.E. VALVE (HADLEY)



O.E. VALVE (HALDEX)

